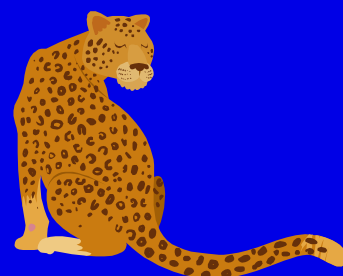


GILHAM ELEMENTARY SCHOOL

JAGUAR JIVE



VOLUME 24, ISSUE 4

JANUARY 2015

INSIDE THIS ISSUE:

School Closure Alerts	1
PTO Board and Site Council	2
Upcoming PTO Events	3
Helpful Hints and Policy Reminders	4
Wall of Fame	5

Wondering about Winter Weather?

Sign up now for weather-related school closure alerts!

When schools close or bus routes change due to hazardous winter weather, you want to know as quickly as possible. There are several ways to get the news on snowy or icy days:

- Text-message alerts via Twitter (go to www.4j.lane.edu/weather to learn how to sign up)
- 4J website, www.4j.lane.edu
- KRVM 91.9 FM
- Other radio and television news stations



If there is a change in the school schedule or bus routes due to inclement weather, Eugene School District 4J will announce the change. If school is in session and on regular schedule, the district will NOT make an announcement. Weather-related school closure decisions normally are made early in the morning and announced via all methods by 6:30 a.m. These decisions are made district wide and are the same for every 4J school.

Parents of students who ride school buses that sometimes use snow routes have been informed of what to do when snow routes are in effect.

If school is in session, families are encouraged to consider road conditions in their areas and make their own decisions based on safety. Parents' individual decisions about school attendance will be honored.

Tune In to School News

More and more people get their news online these days. Now you can stay informed about 4J schools in the same way.

4J School News: <http://eepurl.com/fShWn>

Subscribe to key updates about schools and programs in the Eugene School District. You'll receive an email about once or twice per month.



Facebook: facebook.com/4jschools

Get daily updates on district news, school events, and fun photos and facts, right in your Facebook news feed.



Twitter: twitter.com/4jschools

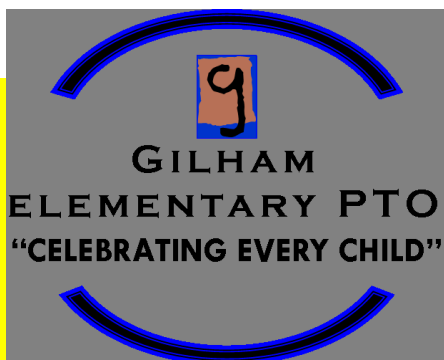
Follow @4jschools for occasional tweets about 4J school and district news.

School Closure Alerts: twitter.com/4jweather

Sign up to receive alerts when hazardous weather leads to school closures or snow routes for buses:

Follow @4Jweather and set 4J's tweets to go to your phone.





2014-2015

PTO Board

Sunshine Murray & Berenice Villegas
- Co-Presidents

Beth Hopkins & Celeste Marshall
- Co-Secretaries

Wendy Lininger - Treasurer

Mia Kubu & Berenice Villegas
- Co-Fundraising Chair

Kaleen Stoddard & Jessica Hunt
- Co-Events Chair

Susan Essin & Mandy Core
- Site Council Chair

PTO General Board:

Sunshine Murray and Lori Durling
- Teacher Appreciation

2014-2015
Site Council

Mandy Core - Parent

Susan Essin- Parent

Linda Willis - Support Staff

Candace Lovato - Teacher

Paula Cates - Teacher

Annette Corbeau - Teacher

Susie Belnap - Teacher

Gina Wilde– Administrative

Check out the NEW PTO Website!!

<http://gilham-ptu.webs.com>



Upcoming PTO Events

PTO Parent Meeting - January 13 @ 6:30pm in the Library

- FREE Childcare (ages 3 and up)

Family Fun Night - BINGO! January 23 @ 6-8pm in the Cafeteria

- It's FREE!!

Parent's Night Out - Friday, February 13 @ 5-8pm in the Cafeteria and Gym

- \$10 first child, \$5 each additional child.
- Limited to first 100 kids paid for.
- So sign up and pay in the office ASAP!

Save the Date for the Dinner Auction!!!

- This year's auction will be held on Friday, March 6th!

We would love to see you there! If you have any interest in helping out, even in a

small capacity, please contact gilham.pto.secretary@gmail.com.

As always, we invite parents to gather donations from employers, friends, and local businesses at any time. You can drop any donations off in the office. We will also be taking donations of bottles of wine valued at \$15+ for the wine wall!

Ms. Ragland's Morning Kindergarten Class

Needs Volunteers – We could use more classroom volunteers to help us with Monday Mailers and filing, special projects, reading and math groups, or listening to a kinder read. We especially need more help on Monday, Tuesday, Thursday and Friday between 8:00-9:00, or stay with us all day until 10:35. You do need to complete a background check before volunteering at school. Please contact me if you have some extra time to share your talents with us.

Thank you!

Betsy Ragland, Morning Kindergarten Teacher

ragland_b@4j.lane.edu

541-790-6200.

**GILHAM'S DECEMBER
VOLUNTEER HOURS**

140

**THANKS TO ALL OUR
VOLUNTEERS.**

Parents' Helpful Hints & Policy Reminders

SCHOOL HOURS

Grades 1—5

Monday, Tuesday, Thursday and Friday from 7:55 a.m. to 2:10 p.m.

Wednesday

(Early Release)

7:55 a.m. to 1:00 p.m.

Morning Kindergarten

Monday, Tuesday, Thursday and Friday from 7:55 a.m. to 10:35 a.m.

Wednesday (Early Release)

7:55 a.m. to 9:55 a.m.

Afternoon Kindergarten

Monday, Tuesday, Thursday and Friday from 11:30 a.m. to 2:10 p.m.

Wednesday (Early Release)

11:00 a.m. to 1:00 p.m.

Students are encouraged to be in their classrooms by 7:45 a.m.

ABSENT OR LATE



Thank you to all those parents who remember to call the office when your child is absent or late. Please help us ensure the safety of your child by calling the office before 8:15 a.m. on the day your child is

absent. If your child is late, please have him/her check in at the office before going to the classroom. The attendance line number is 790-6225.

SICKNESS

If your child has not been fever free in the last 24 hours, please keep your child home. If your child is not well enough to participate in school

(recess, P.E., etc.), please keep your child home.

Elementary schools do not have a full-time school nurse on site. Gilham has a nurse available on Mondays. If your child complains of feeling ill, we need to call you to decide what we should do since we cannot diagnose symptoms.

LOST ITEMS

Please label all items brought to school with your child's name. All lost clothing items are placed in the lost and found shelves located in the main hallway. Smaller items like watches, glasses, etc. are kept in the office.

If your child has not been fever free in the last 24 hours, please keep them home.

HEALTH SERVICES

Gilham's school nurse is only on-site Mondays, otherwise first aid is provided by those staff members who hold first aid cards. Emergencies are handled by 911. Please do not send children to school for medical services.

MEDICINE DURING SCHOOL HOURS

Oregon law and district policy require all medication, (including over-the-counter cough drops, ibuprophen, etc.) to be administered in the office from the original container. We must have a Health Service Medication Form filled out and signed by the parent. We will be happy to send one home with your child or you may stop by the office and fill one out.

MEDICATION: NO HANDWRITTEN NOTES

For the safety of all children, no child is allowed to carry medication (inhalers and bee sting kits are exceptions if registered with the office and with parent or physician written instructions).

School personnel will accept changes in the medication dosage or time only with a new properly labeled pharmacy container reflecting the changes in dosage and/or time administered. Amoxicillin and other medications requiring three doses a day ARE

NOT GIVEN at school. Please make arrangements to have the second dose given after school.

If you have any questions regarding medication procedures, please call the office at 790-6200.

PICKING UP YOUR CHILD EARLY

Please do not call the office to have your child wait for you in the office. We will call your child to the office when you arrive to sign him/her out. You are welcome to send a note to let your teacher know why your child is leaving. Please allow yourself extra time to get your child from his/her classroom.

MOVING: CHANGE OF ADDRESS

Please notify the main office of any changes including address, work or home phone numbers, or emergency contact information. It is essential that we know how to reach you in case of an emergency. It is also good practice for children to know where you can be reached.

MESSAGES FOR YOUR CHILDREN

Because of the increasing growth of our

school, we seek your help in asking that you not call during the day to make arrangements for your child.

Please note: We will give messages to students if they are of an emergency nature. We will not interrupt a class for reminders.

Our primary purpose is to protect the classroom instruction time. Interrupting the classroom for messages disrupts this instruction time. In order to give one student a message, we are required to disrupt all students.

Please plan ahead. If you are worried your child will forget some important information, send a written note with your student for the teacher.

Messages received after 1:30 p.m. are NOT guaranteed to reach the student. Please call in the morning if possible.



Way to GO Wall of Fame Winners!!

Each month teachers choose a few students to honor for their outstanding effort and citizenship. These students get their picture taken and earn a special award that is placed on the wall. Stop by the main hall and honor our exceptional students! The honorees for December include:



Ella Christiansen

Henry Vitus

Michelle Lee

Kendall Quinney

Londyn Miller

Rylee Brennan

Faisal Algubaisi

Elsie Anderson

Micah Brokopp

Owen Powell

Ayesha Batra

Alan Brown

Rosie Davis

Ben Davis

Sierra Wigget

Carter Schmidt

Tyler Graham

Teia Thompson

Raegyn Miller

Presious Reynaga-Pelayo

Emma Watson

Natalie Kaiser

Chase Prusz

Abigale Schnoor

Karem Vargas

Derek Frey

Leni Pierson

Justin Ruiz

Alexa Powell

Kyler Cordell

Franklin Stewart

Isaac Peters

Santi Valdivia

Shyonna Landrum

Eduardo Matheus

Kacie Lee

Rowan Killen

Grace Miller



Jaguar Jive



Gilham Elementary School

3307 Honeywood Street

Eugene, Oregon 97408

Phone: 541 790 6200

Fax: 541 790 6205

<http://schools.4j.lane.edu/gilham>

Volume 24, Issue 4

Principal

Gina Wilde

Office Managers

Linda Willis
Patti Gehlhaar

Newsletter Editor

Lena Ajay
541-343-2621
ajaylena@gmail.com

Deadline for Next Issue
January 20, 2015



Check Out the Gilham Website

<http://schools.4j.lane.edu/gilham>

You can:

- Get general information
- School hours and phone #'s
- See a current Gilham calendar
- See a current lunch menu or make a payment on your lunch account
- Find staff e-mail addresses
- Look at the current Jaguar Jive newsletter
- Find forms on line
- Look at what's happening in the classrooms
- Find information about after-school activities and links to their sites

Make Gilham a Favorite or save it to your desktop!!!