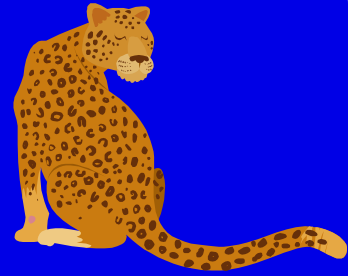


GILHAM  
ELEMENTARY  
SCHOOL



# JAGUAR JIVE



VOLUME 24, ISSUE 8

APRIL 2015

## Help Your Child Succeed in School

### INSIDE THIS ISSUE:

PTO/Site Council	2
Papa's Pizza Flyer	3
Gilham Carnival	4
Book Fair	5
Note from Cafeteria	6
Note from Nurse	6
News from PTO	6
Reminders and Procedures	7
Wall of Fame	8

It's important for parents to be involved in their children's education. Although you might think the primary responsibility for teaching our children lies with the schools and teachers, parents play a very important role in education. Help your children achieve all they can.

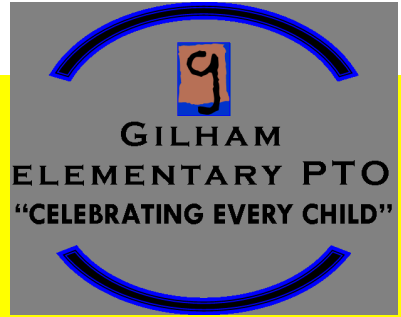
Here are some helpful tips:

- Make a schedule for homework
- Check homework assignments daily
- Read with your child
- Establish open communication with the teacher
- Keep house rules
- Make regular bedtimes
- Communicate with your child about school
- Know your child and understand signs of learning problems
- If your child has problems with some subjects, consider tutoring or another type of enhancement program
- Praise children for good grades
- Ensure proper attendance
- Provide breakfast for optimal learning throughout the day
- Limit television on school nights
- Encourage your child to participate in class
- Help your children learn good study habits
- Study with your children and help them prepare for tests



From NcomN.com





**2014-2015**

**PTO Board**

**Sunshine Murray & Berenice Villegas**  
- Co-Presidents

**Beth Hopkins & Celeste Marshall**  
- Co-Secretaries

**Wendy Lininger** - Treasurer

**Mia Kubu & Berenice Villegas**  
- Co-Fundraising Chair

**Kaleen Stoddard & Jessica Hunt**  
- Co-Events Chair

**Susan Essin & Mandy Core**  
- Site Council Chair

**PTO General Board:**

**Sunshine Murray and Lori Durling**  
- Teacher Appreciation

**2014-2015**

**Site Council**

**Mandy Core** - Parent

**Susan Essin**- Parent

**Linda Willis** - Support Staff

**Candace Lovato** - Teacher

**Paula Cates** - Teacher

**Annette Corbeau** - Teacher

**Susie Belnap** - Teacher

**Gina Wilde**– Administrative



**Check out the NEW PTO Website!!**  
<http://gilham-ptoweb.com>



1577 Coburg Road  
Eugene, OR 97401  
541-686-0750

[www.papaspizza.net](http://www.papaspizza.net)



We are hosting a PIZZA DAY at  
COBURG RD PAPA'S PIZZA for:

**WILLIAMS FAMILY  
MEMORIAL FUND**

Bring this flyer into Papa's Pizza on **April 7th**  
and the organization will receive **50%** of the value of the  
food you purchase! You also have the choice of  
purchasing **Fundraiser Bucks** that are good for all  
future purchases. These Bucks will earn **25%** of their  
value for the organization.

Please come into Papa's and help us out!

With your support on **April 7, 2015**  
we can have a really successful fundraiser!

Beverages and delivery orders are excluded.  
These flyers cannot be distributed at Papa's Pizza.

This fundraiser flyer is valid **ALL DAY**  
only on specified date.

Join us on Facebook!



[www.facebook.com/PapasPizzaCoburgRd](http://www.facebook.com/PapasPizzaCoburgRd)

Total Food Order \$ \_\_\_\_\_

All Gift Certificates Purchased 25%\$ \_\_\_\_\_

# It's Carnival Time!!

**When:** Friday, April 24<sup>th</sup> from 5:30-7:30 PM

**Where:** Gilham gym, music room, covered area

Join your Gilham school community as this year we travel **"Under the Sea"** for plenty of games, food and fun! The ever popular cake walk is back as well as improved viewing and sound system for the raffling of the always popular class baskets. In addition, class plates will be auctioned off. Look for presale envelopes to come home with your student the week before Carnival. Buy your tickets earlier and save yourself from waiting in line. Hope to see you there!

## IT'S CARNIVAL BASKET TIME

The annual Gilham Carnival is right around the corner! We are excited to have the Famous Class Basket Raffle again this year. In order for it to be a success, we need your help. Please consider donating an item that fits your child's class theme.

No time to shop, we will do it for you! Send in a cash donation and we will take it from there!

The class with the most donated items by April 17<sup>th</sup> will receive a popcorn party purchased from our 5<sup>th</sup> graders!

You may send in items to your child's classroom from April 4<sup>th</sup> through the end of school on April 17<sup>th</sup>.

Aaron AM/PM	Crayola
Ragland	Arts and Crafts
Hess	Oregon Ducks
McCaskill	Summer Fun
Norton	Bakers Basket
Corbeau	Ice Cream
Lovato	Books are Fun
Roseberry	Beach Day
Pond	Lego
Squires	Family Fun
Wilson	BBQ Fun
Baachtel	Nerf
Hinkle	Coffee and Tea
Roderick	Night at the Movies
Belnap	Gardening
Bumstead	Pets
Gulka	Lego

Thank you in advance Gilham families! We are better together!





**BOOK**  
COME TO OUR  
**FAIR!**

April 20 - 24

7:30am - 3:30pm

Open during Carnival!

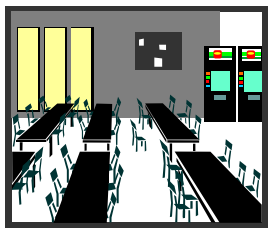
All purchases benefit our school!

SCHOLASTIC



**COME TO OUR**  
**BOOK FAIR**  
**UNDER**  
**THE SEA**

EXPLORE AN OCEAN OF BOOKS!



### Note from the Gilham Cafeteria

The 2014-2015 School year has gone by fast and we need to get those outstanding cafeteria charges paid off.

5th graders- these charges will follow you to middle school and other grades, the charges will still be here next year.

So please pay off your cafeteria charges.

Thank you.  
Teresa Harvey

### Note from the School Nurse

#### Athletic Shoes at School Please

With warmer weather we really encourage athletic shoes at school so our children will run and play outside. When students wear flip flops, sandals and crocs there is less running and playing on the playground or if they do run and play we get stubbed toes, splinters and twisted ankles. For these reasons please monitor your children's choice in shoes.

If you could use some athletic shoes please contact Laurie Rowe, School Nurse and she will assist 541 790-6110.

### News from Gilham PTO

Please be watching for information via email and homework folders on these upcoming events:

**GILHAM'S GOT TALENT** - our very first school wide talent show!!

**PTO Nominations** for the 2015-2016 School Year

**PTO Budget Proposals** for the upcoming school year!

**GILHAM'S  
MARCH  
VOLUNTEER HOURS:**

**671**

**THANKS TO ALL OUR  
VOLUNTEERS!!**

# Reminders and Procedures

## GILHAM ELEMENTARY HOMEROOM PLACEMENT POLICY 2015-2016

As we move toward the end of the year, Gilham will begin discussions regarding classroom placement for the next year. An important piece of our decision-making is to have parent input. Parents provide valuable insight about characteristics unique to their student. We will continue the opportunity for parents to give the school any information about their child they feel would be helpful to us as we make decisions about placement. Information you want us to consider must be submitted in writing on a Student Homeroom Placement Information form and submitted to the office by April 24th. Pick up a form in the office or download it from the Gilham Website.



While we both appreciate and respect parent input regarding the educational setting for the child, we will not consider a request for a particular teacher. Responding to individual requests for particular teachers does not allow us the flexibility we need to adequately balance classrooms for the best possible educational setting. We do share all parent information sheets with the teachers. It is important that we provide the most appropriate and equitable educational setting for each student at Gilham.

We will continue to address, as we have in the past, the social, emotional, and academic needs of each child. Every attempt will be

made to create classes balanced by gender, academic levels, learning styles, and social skills. Strong consideration will also be given to children with special needs.

Our goal is to create the best learning environment possible for all our students. We know your support and assistance with our policies will continue to make Gilham Elementary the best educational opportunity for your student.

## BREAKFAST AT GILHAM

Did you know that Gilham's kitchen is open every morning at 7:30 a.m. and serves a nutritious breakfast for only \$1.40 and that your student can use his or her lunch meal account for breakfast also? Students on both reduced price and free lunch programs are also eligible for a free breakfast every morning. Check out the lunch menu next time it comes home to view the breakfast menu and have breakfast with us one morning.

Please remember to use the

## 24-HOUR ATTENDANCE LINE

To call in all absences and tardies!

**541-790-6225**

## GILHAM ELEMENTARY SCHOOL TARDY/ABSENCE POLICY

Due to the importance of the social, emotional, and academic benefits of arriving at school on time and maintaining good attendance, students are encouraged to attend school daily, arriving at 7:45 a.m., when doors open, providing them with ample time to socialize, prepare for the school day, and ensure participation in valuable opening activities.

**Students are expected to be in class at 7:45 a.m. every day.** Excused absences and tardies consist of: doctor/dentist appointments, illness and bereavement, or preplanned absences. Parent should inform

the school as early as possible if their student will be arriving late or will be absent. This can be done by calling the attendance line at 541-790-6225, e-mailing or sending a note ahead of time. **Students not in class at 7:55 a.m. must check in at the office prior to going to class.** Tardies and unexcused absences become part of each student's permanent record. All tardies and unexcused absences will be notified by the autodial system with a phone call home. This procedure helps to maintain the safety of all students.

Oregon State Law (ORS 339 010-339.990) requires that students attend school on a regular basis. Eight (8) or more half-day absences in a four-week period are considered a violation of Oregon school attendance requirements.

## Check Out Gilham's Online Calendar!!

Go to Gilham's Home Page at <http://schools.4j.lane.edu/gilham>

and click on the Calendar link. The Gilham Web site also offers classroom information, access to library resources, Jaguar Jive archives and more!!

# Gilham Jaguar Wall of Fame

## Gilham Elementary School has a Wall of Fame!



Each month teachers choose a few students to honor for their outstanding effort and citizenship. These students get their picture taken and earn a special award that is placed on the wall. Stop by the main hall and honor our exceptional students!

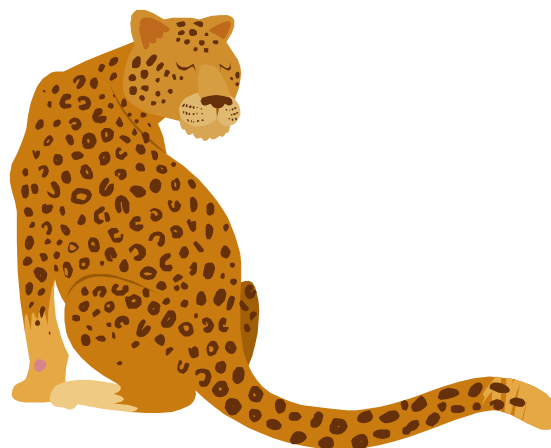
**CONGRATULATIONS!**

## THE MARCH HONOREES INCLUDE:

Leni Pierson  
Justin Reitz  
Amy Gilbert  
Emily Carl  
Christina Richey  
Karter Smith  
Kaylie Geoghegan  
Myles Kincaid  
Haley Langworthy  
Lauren Leon-Vasquez  
Torri Rutter  
Beck Marshall  
Torah Womack  
Roberto Ojeda-Robbins  
Clevon Zemba  
Emily Gates  
Adam Hill  
Maryn Messner  
Brin Christiansen  
Piper Such  
Alex Hartsfield



Nicholas Robles  
Chey Harwood  
Olivia Thorn  
Krystin Stewart  
Alex Cruz-Mendoza  
Carlene Buley  
Sean Murray  
Lexi Stevenson-Matejka  
Craig Mozan  
Chelsea Nash  
Amelia Stoddard  
Madison Fuller  
Elijah Cossentino  
Sevyn Burner  
Kaylee Upshaw  
Henry Vitus  
Luke Thornton







## Jaguar Jive

### Gilham Elementary School

3307 Honeywood Street

Eugene, Oregon 97408

Phone: 541 790 6200

Fax: 541 790 6205

<http://schools.4j.lane.edu/gilham>

Volume 24, Issue 8

#### Principal

Gina Wilde

#### Office Managers

Linda Willis  
Patti Gehlhaar

#### Newsletter Editor

Lena Ajay  
541-343-2621  
[ajaylena@gmail.com](mailto:ajaylena@gmail.com)

**Deadline for Next Issue  
April 24, 2015**



Check Out the Gilham Website  
<http://schools.4j.lane.edu/gilham>

You can:

- Get general information
- School hours and phone #'s
- See a current Gilham calendar
- See a current lunch menu or make a payment on your lunch account
- Find staff e-mail addresses
- Look at the current Jaguar Jive newsletter
- Find forms on line
- Look at what's happening in the classrooms
- Find information about after-school activities and links to their sites

**Make Gilham a Favorite or save it to your desktop!!!**