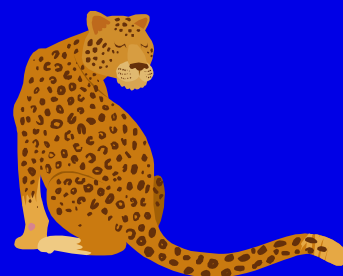


GILHAM ELEMENTARY
SCHOOL

JAGUAR JIVE



VOLUME 26, ISSUE 4

JANUARY 2017

INSIDE THIS ISSUE:

School Closure Alerts	1
Principal's Message	2
School Choice and School Showcase 2017	3-4
Student Volunteers, Box Tops and Labels for Education Contest	5
Thank You—Senior Stockings Community Service Project	6
Wall of Fame	7
Helpful Hints and Policy Reminders	8
Contact us	9



Wondering about Winter Weather?

Sign up now for weather-related school closure alerts!

When schools close or bus routes change due to hazardous winter weather, you want to know as quickly as possible. There are several ways to get the news on snowy or icy days:

- Text-message alerts via Twitter (go to www.4j.lane.edu/weather to learn how to sign up)
- 4J website, www.4j.lane.edu
- KRVM 91.9 FM
- Other radio and television news stations



If there is a change in the school schedule or bus routes due to inclement weather, Eugene School District 4J will announce the change. If school is in session and on regular schedule, the district will NOT make an announcement. Weather-related school closure decisions normally are made early in the morning and announced via all methods by 6:30 a.m. These decisions are made district wide and are the same for every 4J school.

Parents of students who ride school buses that sometimes use snow routes have been informed of what to do when snow routes are in effect.

If school is in session, families are encouraged to consider road conditions in their areas and make their own decisions based on safety. Parents' individual decisions about school attendance will be honored.

Tune in to School News

More and more people get their news online these days. Now you can stay informed about 4J schools in the same way.

4J School News: <http://eepurl.com/fShWn>

Subscribe to key updates about schools and programs in the Eugene School District. You'll receive an email about once or twice per month.



Facebook: [facebook.com/4jschools](https://www.facebook.com/4jschools)

Get daily updates on district news, school events, and fun photos and facts, right in your Facebook news feed.



Twitter: twitter.com/4jschools

Follow @4jschools for occasional tweets about 4J school and district news.

School Closure Alerts: twitter.com/4jweather

Sign up to receive alerts when hazardous weather leads to school closures or snow routes for buses:

Follow @4Jweather and set 4J's tweets to go to your phone.



Principal's Message :

Dear Gilham friends and family,

Whew! We are so excited to be back in school after several weeks of winter break and several snow days. It's great to have the kids back and excited to be here!

I wanted to share about some exciting things that folks have begun and that are in the works for the coming months.

- **Safety Team** - We have established a safety committee, including members from staff, parents, and the neighboring community. They will be working on conducting an internal safety audit and putting together "Go Packs" for each classroom, in the event of an emergency.
- **Full STEAM Ahead!** - We have a core team that is working on researching schedules, equipment, and projects for our beautiful new STEAM lab (Science, Technology, Engineering, Art, and Mathematics). We are beginning with a 3D printer that aligns with the established program at Cal Young. Thank you, parents, for participating in the auction and jogathon, each year. That's how we're able to provide these wonderful opportunities for kids!
- **Time Capsule** - Classes will be starting to plan out what they'd like to contribute to the next Gilham time capsule, to be 'buried' at the end of this year. Your students will be captured in time, and will be able to come back to visit in 2027, as teens and young adults, for a trip down memory lane and a look back at their wonderful years at Gilham.

As always, thank you all for being a part of the magic that makes Gilham such a beautiful place to be!

With gratitude and anticipation,

Principal Wilde

School Choice & School Showcase 2017

School Choice Season is Coming Come see what our schools offer!

In Eugene School District 4J, every school offers an excellent education for our students. Students may enroll in their neighborhood school at any time, or request enrollment in a different 4J school, provided there is a place available. Requests will be accepted in an order determined by lottery.

To be included in the lottery, 4J residents must apply between Tuesday, January 3 and Tuesday, February 28 at 5 p.m. Non-district residents must apply between Wednesday, March 1 and Saturday, April 1 at 5 p.m.

If you have any friends or family members who are considering school choice, please invite them to come learn more about our school and their school choice options!

Elementary School Showcase Saturday, Jan. 21, 9 a.m.–12 noon

4J Education Center, 200 N. Monroe St.

One-stop opportunity to learn all about your school choice options:

Learn about the school choice process (multiple information sessions offered)

Sign up for school visits

Talk with representatives from every 4J elementary school

School Visitation Weeks

Monday, Jan. 23–Friday, Jan. 27

Tuesday, Feb. 21–Friday, Feb. 24

Visit your neighborhood school—and more!

Schools offer tours, open houses and more

Please phone ahead or check the schedule of each school's activities

School Choice Information Meetings

Tuesday, Jan. 17, 7–8 p.m.

Saturday, Jan. 21, 9 a.m.–12 p.m. (during the School Showcase)

Thursday, Feb. 16, 7–8 p.m.

Get answers about the school choice process

Learn more:

www.4j.lane.edu/choice

Elección Escolar: ¡Entérate de lo que ofrecen nuestras escuelas!

En el Distrito Escolar de Eugene 4J, cada escuela ofrece una educación excelente para nuestros estudiantes. Los estudiantes pueden inscribirse en la escuela de su vecindad en cualquier momento, o escoger una escuela diferente si hay espacio disponible. La lotería anual de opción escolar determina el orden en el cual se otorgan los cupos disponibles.

...(cont'd)

....(cont'd)

Residentes del distrito escolar deben completar una solicitud entre el martes, 3 de enero y el martes, 28 de febrero a las 5 p.m. Los residentes de fuera del distrito escolar deben completar una solicitud entre el miércoles, 1 de marzo y el sábado, 1 de abril a las 5 p.m.

Si usted tiene amigos o familiares que estén pensando en elegir una escuela, por favor, invítelos a conocer más sobre nuestra escuela y sus opciones de escuelas!

Exhibición de Escuelas Primarias

sábado, 21 de enero, 9 a.m.–12 p.m.

Centro Educativo 4J, ubicado en el 200 N. Monroe St. en Eugene

- *Una gran oportunidad para enterarse acerca de sus opciones para elegir su escuela:*
- *Haga las preguntas que tenga sobre la elección escolar^[L]_[SEP] (varias presentaciones informativas serán ofrecidas)*
- *Apúntese para visitar las escuelas*
- *Hable con los representantes de cada escuela primaria de 4J*
- *Se proveerán intérpretes en español*

Las Escuelas Estarán Abiertas Para Visitas

lunes, 23 de enero al viernes, 27 de enero

martes, 21 de febrero al viernes, 24 de febrero^[L]_[SEP]

- *Visite la escuela de su vecindad—y mucho más!*
- *Las escuelas tienen diferentes actividades y horarios de visita para los padres^[L]_[SEP]*
- *Favor de ver el horario^[L]_[SEP] o llamar antes de visitar*
- *Para información en español llame al [541-790-7707](tel:541-790-7707)*

Reuniones informativas para el distrito escolar

martes, 17 de enero, 7–8 p.m.

^[L]_[SEP] sábado, 21 de enero, 9 a.m.–12 p.m. (durante la Exhibición de Escuelas Primarias)

jueves, 16 de febrero, 7–8 p.m.^[L]_[SEP]

Centro Educativo 4J, ubicado en el 200 N. Monroe St. en Eugene

- *Información general acerca de las solicitudes y el proceso de inscripción^[L]_[SEP]*
- *Se proveerán intérpretes en español*

Ver más información en:

www.4j.lane.edu/choice/spanish

Student Volunteers

Do you have a middle or high school student that needs volunteer hours or who loves reconnecting with their former elementary teachers and helping out?

If so, there are volunteer opportunities at Gilham. Parents should email Gilham teachers to let them know their child is interested in volunteering. Teachers will email the parent back and let them know specific times the student can volunteer. Please make sure that you email teachers at least 2 days before volunteering as it takes time to plan for the extra help.

Typical jobs include organizing, filing, correcting, labeling and copying to name a few. We love our Gilham family and definitely enjoy reconnecting with students from the past. So send those hard-working, focused, responsible kiddos back our way!

Thanks,
Gilham Staff

Box Tops and Labels for Education Contest

The due date for the next Boxtops and Labels for Education contest is January 26th, 2017. The top 3 classrooms will earn treats. Cut, clip, bag 'em and send them in with your student! Every clip counts!



**GILHAM'S DECEMBER
VOLUNTEER HOURS**

370

**THANKS TO ALL OUR
VOLUNTEERS.**

A great big **THANK YOU** to all the families and classrooms that checked out and filled a stocking for a Gilham neighborhood senior care resident. This was our 16th annual Senior Stockings Community Service Project. With your help, we were able to provide 61 residents with some holiday cheer and lots of love.



Way to GO Wall of Fame Winners!!

Each month teachers choose a few students to honor for their outstanding effort and citizenship. These students get their picture taken and earn a special award that is placed on the wall. Stop by the main hall and honor our exceptional students! The honorees for December 2016 include:



Laney Capiak
 Joel Reynolds
 Harman Gill
 Cobie Page
 Ashley Pruett
 Brooks Kerrigan
 Reggie Toftemark
 Van Williams
 Tatum Carmichael
 Jaxson Kitchens
 Mitchell Rast
 Jayden Robertson
 Claire Green
 McKenzie Mace
 Cord Olson

Liyora Holmes
 Dani Haverland
 Paxton Spike
 Sophia Shores
 Aaron Hartsfield
 Elsie Anderson
 Shaila Gaspar
 Talon Luehring
 Ava Bradford
 Karly Hanson
 Brody Kennedy
 Aubrey Parker
 Ida Schyllander
 Torah Womack
 Amitiel Headley

Axel Van Horn
 Tatianna Washington
 Caleb Singleton
 Roman Denning
 Emily Gates
 Seth McEwen
 Maryn Messner
 Aaliyah Juarez
 Madi Sullivan
 Ethan Matteson
 Kate Gilbert
 Arianna Taylor
 Anna Leiken
 Aurora Van Horn
 Teana Wright

Parents' Helpful Hints & Policy Reminders

SCHOOL HOURS

Grades K - 5

Monday, Tuesday, Thursday and Friday from 7:55 a.m. to 2:10 p.m.

Wednesday

(Early Release)

7:55 a.m. to 1:00 p.m.

Students are encouraged to be in their classrooms by 7:45 a.m.

ABSENT OR LATE

Thank you to all those parents who remember to call the office when your child is absent or late. Please help us ensure the safety of your child by calling the office before 8:15 a.m. on the day your child is absent. If your child is late, please have him/her check in at the office before going



to the classroom. The attendance line number is 790-6225.

SICKNESS

If your child has not been fever free in the last 24 hours, please keep your child home. If your child is not well enough to participate in school (recess, P.E., etc.), please keep your child home.

Elementary schools do not have a full-time school nurse on site. Gilham has a nurse available on Mondays. If your child complains of feeling ill, we need to call you to decide

what we should do since we cannot diagnose symptoms.

LOST ITEMS

Please label all items brought to school with your child's name. All lost clothing items are placed in the lost and found shelves located in the main hallway. Smaller items like watches, glasses, etc. are kept in the office.

If your child has not been fever free in the last 24 hours, please keep them home.

HEALTH SERVICES

Gilham's school nurse is only on-site Mondays, otherwise first aid is provided by those staff members who hold first aid cards. Emergencies are handled by 911. Please do not send children to school for medical services.

MEDICINE DURING SCHOOL HOURS

Oregon law and district policy require all medication, (including over-the-counter cough drops, ibuprophen, etc.) to be administered in the office from the original container. We must have a Health Service Medication Form filled out and signed by the parent. We will be happy to send one home with your child or you may stop by the office and fill one out.

MEDICATION: NO HANDWRITTEN NOTES

For the safety of all children, no child is allowed to carry medication (inhalers and bee sting kits are exceptions if registered with the office and with parent or physician written instructions).

School personnel will accept changes in the medication dosage or time only with a new properly labeled pharmacy container reflecting the changes in dosage and/or time administered. Amoxicillin and other medications requiring three doses a day ARE

NOT GIVEN at school. Please make arrangements to have the second dose given after school.

If you have any questions regarding medication procedures, please call the office at 790-6200.

PICKING UP YOUR CHILD EARLY

Please do not call the office to have your child wait for you in the office. We will call your child to the office when you arrive to sign him/her out. You are welcome to send a note to let your teacher know why your child is leaving. Please allow yourself extra time to get your child from his/her classroom.

MOVING: CHANGE OF ADDRESS

Please notify the main office of any changes including address, work or home phone numbers, or emergency contact information. It is essential that we know how to reach you in case of an emergency. It is also good practice for children to know where you can be reached.

MESSAGES FOR YOUR CHILDREN

Because of the increasing growth of our

school, we seek your help in asking that you not call during the day to make arrangements for your child.

Please note: We will give messages to students if they are of an emergency nature. We will not interrupt a class for reminders.

Our primary purpose is to protect the classroom instruction time. Interrupting the classroom for messages disrupts this instruction time. In order to give one student a message, we are required to disrupt all students.

Please plan ahead. If you are worried your child will forget some important information, send a written note with your student for the teacher.

Messages received after 1:30 p.m. are NOT guaranteed to reach the student. Please call in the morning if possible.





Jaguar Jive



Gilham Elementary School

3307 Honeywood Street
Eugene, Oregon 97408

Phone: 541 790 6200

Fax: 541 790 6205

<http://schools.4j.lane.edu/gilham>

Volume 26, Issue 4

Principal
Gina Wilde

Office Managers
Linda Willis
Patti Gehlhaar

Newsletter Editor
Lena Ajay
541-343-2621
ajaylena@gmail.com

**Deadline for Next Issue
January 27, 2017**



Check Out the Gilham Website

<http://schools.4j.lane.edu/gilham>

You can:

- Get general information
- School hours and phone #'s
- See a current Gilham calendar
- See a current lunch menu or make a payment on your lunch account
- Find staff e-mail addresses
- Look at the current Jaguar Jive newsletter
- Find forms on line
- Look at what's happening in the classrooms
- Find information about after-school activities and links to their sites

Make Gilham a Favorite or save it to your desktop!!!