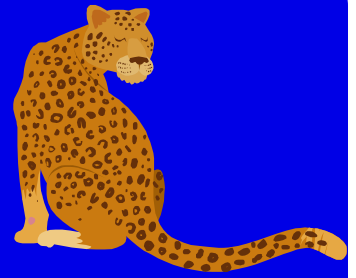


GILHAM
ELEMENTARY
SCHOOL



JAGUAR JIVE



VOLUME 26, ISSUE 7

APRIL 2017

Help Your Child Succeed in School

INSIDE THIS ISSUE:

PTO/Site Council	2
Note from Cafeteria Note from Nurse	3
Reminders and Procedures	4
Wall of Fame	5
Contact us	6

It's important for parents to be involved in their children's education. Although you might think the primary responsibility for teaching our children lies with the schools and teachers, parents play a very important role in education. Help your children achieve all they can.

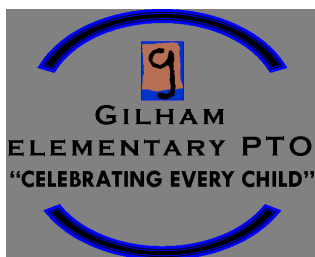
Here are some helpful tips:

- Make a schedule for homework
- Check homework assignments daily
- Read with your child
- Establish open communication with the teacher
- Keep house rules
- Make regular bedtimes
- Communicate with your child about school
- Know your child and understand signs of learning problems
- If your child has problems with some subjects, consider tutoring or another type of enhancement program
- Praise children for good grades
- Ensure proper attendance
- Provide breakfast for optimal learning throughout the day
- Limit television on school nights
- Encourage your child to participate in class
- Help your children learn good study habits
- Study with your children and help them prepare for tests



From NcomN.com





PTO BOARD 2016-2017

President : Mia Kubu

Vice President : OPEN

Past President : Brandyn Rice

Secretary : Kalleen Stoddard and Gretchen Brillon

Events : Monica Brokopp

Treasurer : Stephanie Ritter

Fundraising : OPEN

Site Council : Celeste Marshall and Beth Hopkins

SITE COUNCIL 2016-2017

Parents: Celeste Marshall and Beth Hopkins

Classified: Linda Willis

Teachers: Candace Lovato and Jenna Norton

Administrator: Gina Wilde

Gilham Auction Update:

Well, we did it again, folks! The PTO and Auction Committee would like to express our sincerest thanks to everyone who helped make this year's auction another smashing success! Together, our efforts netted just over \$36,000 that will DIRECTLY benefit Gilham students. It was a wonderful and very successful evening! Cheers!

Upcoming PTO Events:

Next PTO general meeting is April 11. Come join us to begin the conversation on how to spend the money we've made this year and help carnival be another great success.

Bingo night: April 21

Carnival: May 19th

Note from the Gilham Cafeteria :

The 2016-2017 School year has gone by fast and we need to get those outstanding cafeteria charges paid off.

5th graders- these charges will follow you to middle school and other grades, the charges will still be here next year. So please pay off your cafeteria charges.



Thank you.

Terra Cox

Note from the School Nurse : Athletic Shoes at School Please

With warmer weather we really encourage athletic shoes at school so our children will run and play outside. When students wear flip flops, sandals and crocs there is less running and playing on the playground or if they do run and play, we get stubbed toes, splinters and twisted ankles.

For these reasons, please monitor your children's choice in shoes.

If you could use some athletic shoes, please contact **Debbie Soto**, School Nurse and she will assist 541 790-6200.

**GILHAM'S
MARCH
VOLUNTEER HOURS:
750
THANKS TO ALL OUR
VOLUNTEERS!!**

Reminders and Procedures

GILHAM ELEMENTARY HOMEROOM PLACEMENT POLICY 2016-2017

As we move toward the end of the year, Gilham will begin discussions regarding classroom placement for the next year. An important piece of our decision-making is to have parent input. Parents provide valuable insight about characteristics unique to their student. We will continue the opportunity for parents to give the school any information about their child they feel would be helpful to us as we make decisions about placement. Information you want us to consider must be submitted in writing on a Student Homeroom Placement Information form and submitted to the office by April 29th. Pick up a form in the office or download it from the Gilham Website.



While we both appreciate and respect parent input regarding the educational setting for the child, we will not consider a request for a particular teacher. Responding to individual requests for particular teachers does not allow us the flexibility we need to adequately balance classrooms for the best possible educational setting. We do share all parent information sheets with the teachers. It is important that we provide the most appropriate and equitable educational setting for each student at Gilham.

We will continue to address, as we have in the past, the social, emotional, and academic needs of each child. Every attempt will be

made to create classes balanced by gender, academic levels, learning styles, and social skills. Strong consideration will also be given to children with special needs.

Our goal is to create the best learning environment possible for all our students. We know your support and assistance with our policies will continue to make Gilham Elementary the best educational opportunity for your student.

BREAKFAST AT GILHAM

Did you know that Gilham's kitchen is open every morning at 7:30 a.m. and serves a nutritious breakfast for only \$1.40 and that your student can use his or her lunch meal account for breakfast also? Students on both reduced price and free lunch programs are also eligible for a free breakfast every morning. Check out the lunch menu next time it comes home to view the breakfast menu and have breakfast with us one morning.

Please remember to use the

24-HOUR ATTENDANCE LINE

To call in all absences and tardies!

541-790-6225

GILHAM ELEMENTARY SCHOOL TARDY/ABSENCE POLICY

Due to the importance of the social, emotional, and academic benefits of arriving at school on time and maintaining good attendance, students are encouraged to attend school daily, arriving at 7:45 a.m., when doors open, providing them with ample time to socialize, prepare for the school day, and ensure participation in valuable opening activities.

Students are expected to be in class at 7:45 a.m. every day. Excused absences and tardies consist of: doctor/dentist appointments, illness and bereavement, or preplanned absences. Parent should inform

the school as early as possible if their student will be arriving late or will be absent. This can be done by calling the attendance line at 541-790-6225, e-mailing or sending a note ahead of time. **Students not in class at 7:55 a.m. must check in at the office prior to going to class.** Tardies and unexcused absences become part of each student's permanent record. All tardies and unexcused absences will be notified by the autodial system with a phone call home. This procedure helps to maintain the safety of all students.

Oregon State Law (ORS 339 010-339.990) requires that students attend school on a regular basis. Eight (8) or more half-day absences in a four-week period are considered a violation of Oregon school attendance requirements.

Check Out Gilham's Online Calendar!!

Go to Gilham's Home Page at <http://schools.4j.lane.edu/gilham>

and click on the Calendar link. The Gilham Web site also offers classroom information, access to library resources, Jaguar Jive archives and more!!

Gilham Wall of Fame Winners April 2017

Each month teachers choose a few students to honor for their outstanding effort and citizenship. These students get their picture taken and earn a special award that is placed on the wall. Please stop by the main hall and honor our exceptional students!

The honorees for April 2017 are:

Charlie Sharps
Maddy Core
Sophia Ogden-Pipkin
Winter Fitts
Sophia Fonseca
Kama Markel
Sophia Castro
Rose McBride
Quinn Marshall
James Aung
Lucas Lemmon
Henry Smith
Bradley Dodd
Leo Morris
Daisy Summer
Parker Sullivan
Abigail Burger
Kylia Thomas
Abigail Cuevas-Nguyen
Evana Bragg
Landen Smith
Karter Smith

Finn Reynolds
Emma Icenhower
Taryn Tufares
Mateo Ojeda-Robbins
Aleksandra Lee
Mackenna Taylor
Emma Petersen
Briant Chamberlain
Jacob Galles-Jacobsen
Aspen Womack
Keira Scholes
Olivia Wichman
Cadence Hopkins
Alexa Burger
Daniel Lee
Kaitlyn Cramer
Colin Bonine
Garrett Lehmann
Abigail Bunting
Peyton Anderson
Evanna Bragg
Adam Castaneda





Jaguar Jive

Gilham Elementary School

3307 Honeywood Street

Eugene, Oregon 97408

Phone: 541 790 6200

Fax: 541 790 6205

<http://schools.4j.lane.edu/gilham>

Volume 26, Issue 7

Principal

Gina Wilde

Office Managers

Linda Willis
Patti Gehlhaar

Newsletter Editor

Lena Ajay
541-343-2621
ajaylena@gmail.com

**Deadline for Next Issue
April 21, 2017**



Check Out the Gilham Website
<http://schools.4j.lane.edu/gilham>

You can:

- Get general information
- School hours and phone #'s
- See a current Gilham calendar
- See a current lunch menu or make a payment on your lunch account
- Find staff e-mail addresses
- Look at the current Jaguar Jive newsletter
- Find forms on line
- Look at what's happening in the classrooms
- Find information about after-school activities and links to their sites

Make Gilham a Favorite or save it to your desktop!!!